

M25 Cellular 4G LTE CBRS 5G NR Omni Directional Antenna w/Bracket Mount  
 Wide-Band Cellular 4G LTE CBRS 5G NR / WiFi 2.4GHz

Multi-Carrier / Multi-Technology 4G LTE CBRS 5G NR Compliant	Verizon 4G 5G (DSS) Bands: B2 B4 B5 B13 B46 B48 B66 T-Mobile 4G 5G Bands: B2 B4 B5 B12 B25 B26 B41 B66 B71 n25 n41 n66 n71 AT&T 4G 5G Bands: B2 B4 B5 B12 B14 B17 B29 B30 B66 n5 5G NR Bands: n77 n78 n79 CBRS Band: B48
4G CBRS 5G NR Frequency Range WiFi Frequency Range	617-960MHz / 1710-6000MHz 2.4-2.5GHz
4G 5G NR Avg. Peak Gain: Isotropic WiFi Avg. Peak Gain: Isotropic	(7dBi) 617-960MHz / (9dBi) 1710-6000MHz / (9dBi) CBRS 3500-3700Mhz (10dBi) 2.4-2.5GHz
Horizontal Half Power Beamwidth	360° / 360°
Vertical Half Power Beamwidth	40° / 20°
VSWR	≤2.0 / ≤2.5
Impedance	50 Ohms
Polarization	Vertical
Max. Power	50W
Dimensions	Height: 22" / 560mm - Diameter: 3" / 78mm
Radome	High Impact Polycarbonate
Operating Temperature	40° to 158° (°F)
Wind Velocity	140 MPH
Ingress Protection	IP67
Mounting Mast Diameter	2"~3.5" / 50mm~90mm
Net Weight	2.2lbs / 1kg Includes mounting hardware
Connector Type	N Female Coax Cables Sold Separately
Mount Type	Includes Mounting Hardware Mounting Bracket + 2 x U-Bolt Sets

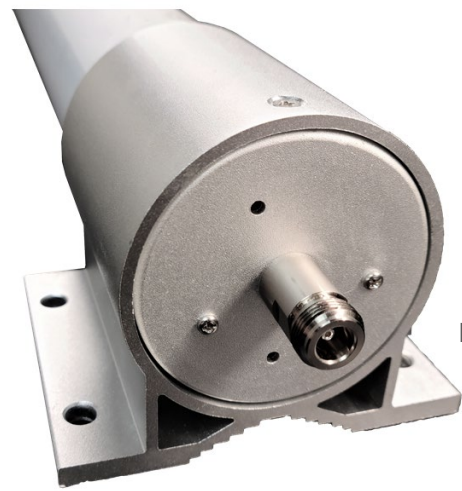


M25 Omni Directional 4G LTE CBRS 5G NR Antenna  
Cellular 3G 4G LTE CBRS 5G NR / WiFi 2.4GHz  
Bracket Mount for Outside Use



560mm  
22"

78mm / 3"



N Female

HD Aluminum  
Mounting Bracket

2 x U-Bolt Sets



M25 Series Antenna Includes Built in Ground Plane / Includes Bracket Mount Hardware  
"Built To Spec" Custom Coax Cable Options are Available.