

M39 2-Lead Omni MIMO Series M2M IoT Antenna Specifications

*MIMO 2 x 4G LTE CBRS 5G NR / MIMO 2 x Multi Band WiFi 6 (2.4~6GHz) WiFi HaLow (902~928Mhz) / Bluetooth (2.4GHz)
Includes Mounting Hardware*

4G LTE CBRS 5G NR Frequency Range Bluetooth (2.4GHz) WiFi 6 Frequency Range	617-960MHz / 1710-6000MHz 2.4-2.5GHz / 4.9-6GHz (Concurrent)
4G CBRS 5G NR Avg. Peak Gain: <i>Isotropic</i> WiFi 6 / Bluetooth Avg. Peak Gain: <i>Isotropic</i>	(7dBi) 617-960MHz / (9dBi) 1710-3800MHz / (9dBi) 4900-6000MHz / (9dBi) CBRS 3.5GHz (9dBi) 2.4~6Hz
Typical Efficiency 4G 5G Elements	617-960MHz >50% 1710-3800MHz >50% 4900-6000MHz >55%
Typical Efficiency WiFi Elements	>70%
Isolation 4G 5G Elements Isolation WiFi / Bluetooth Elements	>10dB >12dB
Correlation Co-efficient 4G 5G Elements Correlation Co-efficient WiFi / BT Elements	<0.2 <0.1
Horizontal Half Power Beamwidth	360° / 360°
Vertical Half Power Beamwidth	40° / 25°
VSWR	≤2.0 / ≤2.0
Nominal Impedance	50Ω
Polarization	MIMO 2 x Vertical Omni Directional
Max. Power	50W

Mechanical / Environmental Specifications

Radome	High Impact Polycarbonate Height: 35" / 890mm - Diameter: 3" / 78mm
Connector Types	2 x N Female
Coax Cables	Sold Separately <i>Standard and Custom Cable Length Options are Available</i> <i>All Standard Connector Ends Available (Including FAKRA Connector Ends)</i>
Mounting Hardware (<i>Stainless Steel</i>)	Includes Mounting Hardware <i>Bracket Mount + 2 x U-Bolt Sets</i>
Mounting Mast Diameter	2"~3.5" / 50mm~90mm
Ingress Protection	IP69K
Wind Velocity	140 MPH
Operating Temp (°F)	-40° / +158° (°F)
Weight	3.75lb / 1.7kg



M39 2-Lead Omni MIMO Series Cellular 4G 5G / WiFi 6 Antenna
 MIMO 2-Lead Cellular 4G LTE CBRS 5G NR / MIMO WiFi 6 / HaLow
 Omni Directional / Bracket Mount / Outside Use
 * Contact Us For M39 HaLow WiFi Configuration Options

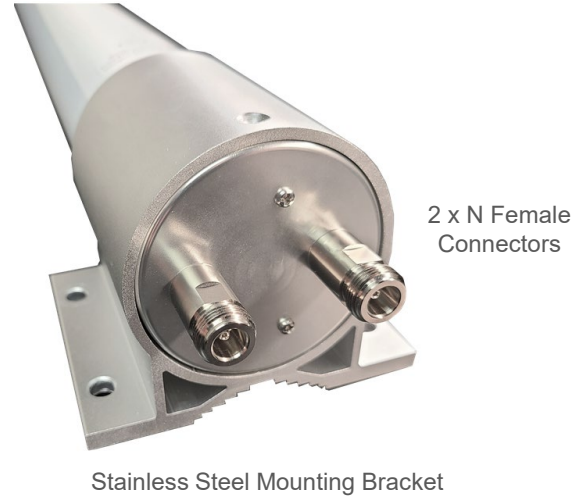
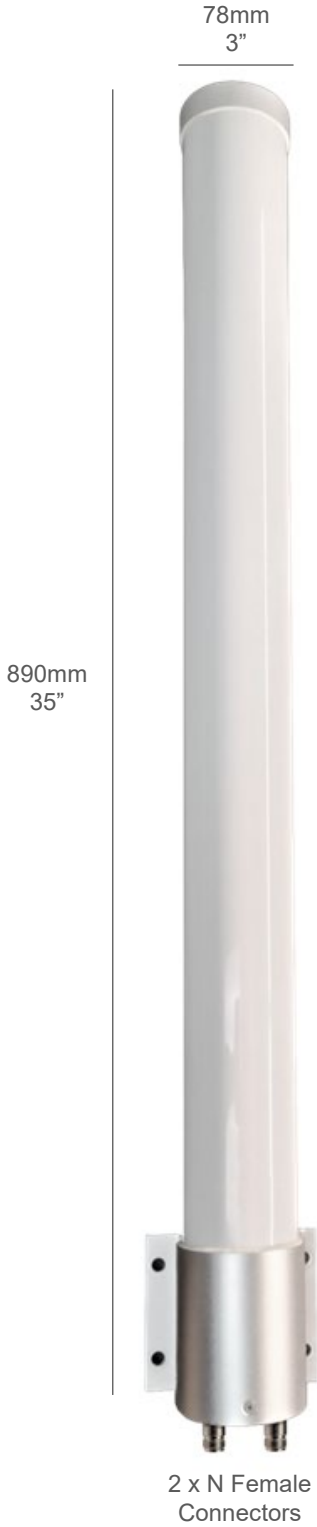
Supported Cellular Service Provider Networks	
Verizon	Verizon 4G LTE 5G NR Bands 4G LTE: B2 B4 B5 B13 B46 B48 B66 (CBRS B48) 5G NR: N2 N5 N66 N77 Carriers (MVNOs) using Verizon Network: <i>Reach Mobile, Red Pocket Mobile, Spectrum Mobile, Ting Total, Tracfone, Twigby, US Mobile, Visible, Xfinity Mobile</i>
T-Mobile	Mobile 4G LTE 5G NR Bands 4G LTE: B2 B4 B5 B12 B25 B26 B41 B48 B66 B71 (CBRS B48) 5G NR: N25 N41 N66 N71 Carriers (MVNOs) using T-Mobile Network <i>Mint Mobile, TextNow, Lyca Mobile, Metro, Red Pocket Mobile Republic Wireless, Simple Mobile, Ting, Tracfone, US Mobile</i>
AT&T	AT&T 4G LTE 5G NR Bands 4G LTE: B2 B4 B5 B12 B14 B17 B29 B30 B48 B66 (CBRS B48) GSM: 1900MHz 5G NR: N2 N5 N66 N77 Carriers (MVNOs) using AT&T Network <i>Cricket Wireless, Net 10 Wireless, Red Pocket Mobile, Straight Talk</i>
Supported Cellular Bands	
5G NR Bands	n1 n2 n3 n5 n7 n8 n12 n13 n14 n18 n20 n25 n26 n28 n29 n30 n38 n40 n41 n48-CBRS n66 n71 n75 n76 n77 n78 n79 C-band
4G LTE Bands	B1 B2 B3 B4 B5 B7 B8 B12 B13 B14-FirstNet B17 B18 B19 B20 B25 B26 B28 B29 B30 B32 B38 B39 B40 B41 B42 B43 B46-LAA B48-CBRS B66 B71
3G Bands	B1 B2 B3 B4 B5 B6 B8 B9 B19
Supported WiFi IEEE Standards	
WiFi 1-6	WiFi 1 WIF 2 (802.11ba) WiFi 3 (802.11g) WiFi 4 (802.11n) WiFi 5 (802.11ac) WiiFi 6 6E (802.11ax)
* WiFi HaLow	WiFi HaLow (802.11ah) * Contact Us For M39 HaLow WiFi Configuration Options





M39 2-Lead Omni MIMO Series Cellular 4G 5G / WiFi 6 Antenna
 MIMO 2-Lead Cellular 4G LTE CBRS 5G NR / MIMO WiFi 6 / HaLow
 Omni Directional / Bracket Mount / Outside Use
 * Contact Us For M39 HaLow WiFi Configuration Options

M39 2-Lead Omni MIMO Series Antenna
 Dimensions / Mounting Bracket



Includes
 Mounting Bracket
 2 x U-Bolt Sets



M39 Series Enterprise Grade Antenna - Includes Mounting Bracket Hardware / 2 x N Female
 "Built To Spec" Custom Extension Cable Options are Available. Contact us for details.