



M29B 3-Lead Cellular 4G LTE 5G NR / WiFi 6 / GPS GNSS Antenna  
 MIMO Cellular 4G LTE 5G NR / MIMO WiFi 6 / GPS GNSS  
 Omni-Directional / Fixed Bolt Mount / Outside or Inside Use  
 Optional: Rugged M-Lander Adjustable Magnetic Mount Adapter  
 Optional: L-Bracket Mount Adapter

M29B 3-Lead Omni MIMO Cellular 4G LTE 5G NR / MIMO WiFi 6 / GPS GNSS Specifications – Bolt Mount <i>Multi-Carrier MIMO Cellular 4G LTE CBRS 5G NR / GPS GNSS / MIMO Multi Band WiFi 6 (2.4GHz ~6GHz) / Bluetooth (2.4GHz)</i>	
4G LTE CBRS 5G NR Frequency Range Bluetooth (2.4GHz) WiFi 6 Frequency Range	617-960MHz / 1710-6000MHz 2.4-2.5GHz / 4.9-6GHz (Concurrent)
4G CBRS 5G NR Avg. Peak Gain: <i>Isotropic</i> WiFi / Bluetooth Avg. Peak Gain: <i>Isotropic</i>	(3.5dBi) 617-960MHz / (6dBi) 1710-3800MHz / (7dBi) 4900-6000MHz / (5dBi) CBRS 3.5GHz (9dBi) 2.4-2.5GHz
Typical Efficiency 4G 5G Elements	617-960MHz >70% 1710-3800MHz >70% 4900-6000MHz >85%
Typical Efficiency WiFi Elements	>70%
Isolation 4G 5G Elements Isolation WiFi / Bluetooth Elements	>10dB >12dB
Correlation Co-efficient 4G 5G Elements Correlation Co-efficient WiFi / BT Elements	<0.2 <0.1
Horizontal Half Power Beamwidth	360° / 360°
Vertical Half Power Beamwidth	70° / 35°
VSWR	≤2.0 / ≤2.0
Nominal Impedance	50Ω
Polarization	MIMO 2 x Vertical Omni Directional
Max. Power	50W
GPS GNSS Specifications	GPS Glonass Galileo QZSS BeiDou Compass <i>In-Band Frequency Interference Filter for LTE B13 B14</i>
Frequency Range	1562-1612MHz
LNA Gain	29dB ± 2dB
VSWR	<2.0:1
Out of Band Rejection	>45dB (@ > +/- 100MHz f)
Typical Noise Figure	<-2dB
Notch Filter Rejection @787MHz	24dB
Operating Voltage	3-5V DC
Typical Current	15mA

M29B / M29BF MIMO Series Antennas Include Built in Ground Plane. Includes 3 x 15ft Coax Cables  
 "Built To Spec" Custom Cable Options are Available. Contact us for details.





M29B 3-Lead Cellular 4G LTE 5G NR / WiFi 6 / GPS GNSS Antenna  
 MIMO Cellular 4G LTE 5G NR / MIMO WiFi 6 / GPS GNSS  
 Omni-Directional / Fixed Bolt Mount / Outside or Inside Use  
 Optional: Rugged M-Lander Adjustable Magnetic Mount Adapter  
 Optional: L-Bracket Mount Adapter

Mechanical / Environmental Specifications	
Radome	High Impact Polycarbonate Height: 8" / 206mm - Diameter: 3" / 78mm
Connector Types	All Standard RF Connectors Available (Including FAKRA Connector Ends)
3 x Coax Cables (All Cables Full Length)	2 x Cellular 4G 5G / WiFi 6 (AGA200 Coax) / GPS GNSS (AGA100 Coax) – 16ft 2 x WiFi 6 (AGA200 Coax) / GPS GNSS (AGA100 Coax) – 16ft Cellular 4G 5G / WiFi 6 (AGA200 Coax) / GPS GNSS (AGA100 Coax) – 16ft <i>Custom cable lengths &amp; connector end options are available (Including FAKRA Connector Ends)</i>
Mounting Bolt Dimensions (Stainless Steel)	15.87mm (5/8") Length / 19mm (3/4") Diameter
Mount Type	Bolt Mount Optional: M-Lander Magnetic Mount / L-Bracket Mount (Sold Separately)
Ingress Protection	IP69K
Wind Velocity	120 MPH
Operating Temp	-40° / +80°C (-40° / +176°F)
Net Weight	1.5bs / 0.7kg
Supported Cellular Service Provider Networks	
Verizon	Verizon 4G LTE 5G NR Bands 4G LTE: B2 B4 B5 B13 B46 B48 B66 (CBRS B48) 5G NR: N2 N5 N66 N77 Carriers (MVNOs) using Verizon Network: <i>Reach Mobile, Red Pocket Mobile, Spectrum Mobile, Ting Total, Tracfone, Twigby, US Mobile, Visible, Xfinity Mobile</i>
T-Mobile	Mobile 4G LTE 5G NR Bands 4G LTE: B2 B4 B5 B12 B25 B26 B41 B48 B66 B71 (CBRS B48) 5G NR: N25 N41 N66 N71 Carriers (MVNOs) using T-Mobile Network <i>Mint Mobile, TextNow, Lyca Mobile, Metro, Red Pocket Mobile Republic Wireless, Simple Mobile, Ting, Tracfone, US Mobile</i>
AT&T	AT&T 4G LTE 5G NR Bands 4G LTE: B2 B4 B5 B12 B14 B17 B29 B30 B48 B66 (CBRS B48) GSM: 1900MHz 5G NR: N2 N5 N66 N77 Carriers (MVNOs) using AT&T Network <i>Cricket Wireless, Net 10 Wireless, Red Pocket Mobile, Straight Talk</i>
Supported Cellular Bands	
5G NR Bands	n1 n2 n3 n5 n7 n8 n12 n13 n14 n18 n20 n25 n26 n28 n29 n30 n38 n40 n41 n48-CBRS n66 n71 n75 n76 n77 n78 n79 C-band
4G LTE Bands	B1 B2 B3 B4 B5 B7 B8 B12 B13 B14-FirstNet B17 B18 B19 B20 B25 B26 B28 B29 B30 B32 B38 B39 B40 B41 B42 B43 B46-LAA B48-CBRS B66 B71
3G Bands	B1 B2 B3 B4 B5 B6 B8 B9 B19

M29B / M29BF MIMO Series Antennas Include Built in Ground Plane. Includes 3 x 15ft Coax Cables  
 "Built To Spec" Custom Cable Options are Available. Contact us for details.





M29B 3-Lead Cellular 4G LTE 5G NR / WiFi 6 / GPS GNSS Antenna  
 MIMO Cellular 4G LTE 5G NR / MIMO WiFi 6 / GPS GNSS  
 Omni-Directional / Fixed Bolt Mount / Outside or Inside Use  
 Optional: Rugged M-Lander Adjustable Magnetic Mount Adapter  
 Optional: L-Bracket Mount Adapter

<b>M29B 3-Lead Omni MIMO Cellular 4G LTE 5G NR / MIMO WiFi 6 / GPS GNSS Antenna – Bolt Mount</b> <i>Dimensions / Configuration Options w/16ft Coax Cables (SMA)</i>	
<b>Configuration Options (SMA)</b>	M29B-16-2CG: MIMO 2 x Cellular 4G 5G / GPS GNSS Antenna w/ 3 x 16ft Coax Cables - 3 x SMA M29B-16-2WG: MIMO 2 x WiFi 6 / GPS GNSS Antenna w/ 3 x 16ft Coax Cables - 2 x RPSMA / SMA M29B-16-CWG: Cellular 4G 5G / WiFi 6 / GPS GNSS Antenna w/ 3 x 16ft Coax Cables - SMA / RPSMA / SMA

M29B Dimensions  
 78mm / 3"

206mm  
 8"



Mounting Bolt  
 15.87mm (5/8") Length  
 19mm (3/4") Diameter

M29B-16-2CG



M29B-16-2WG



M29B-16-CWG



M29B / M29BF MIMO Series Antennas Include Built in Ground Plane. Includes 3 x 15ft Coax Cables  
 "Built To Spec" Custom Cable Options are Available. Contact us for details.

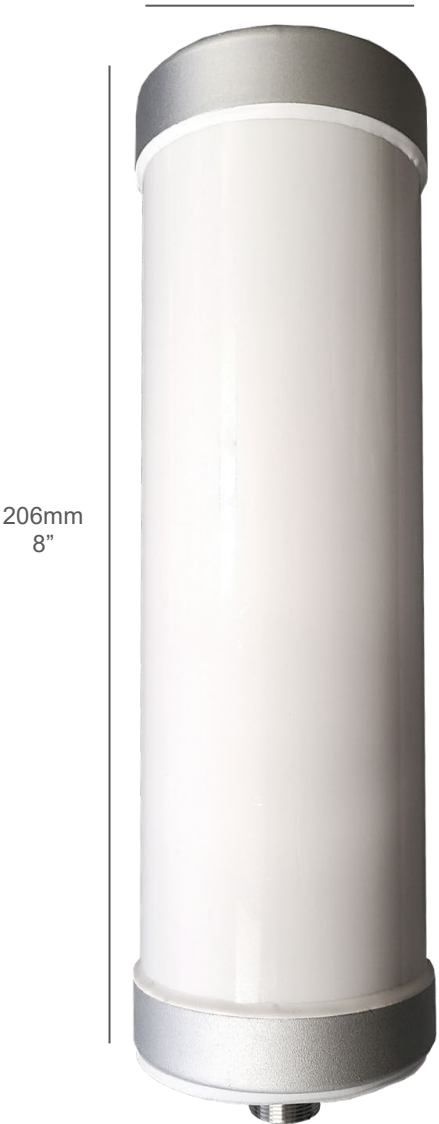


M29BF 3-Lead Cellular 4G LTE 5G NR / WiFi 6 / GPS GNSS Antenna  
 MIMO Cellular 4G LTE 5G NR / MIMO WiFi 6 / GPS GNSS  
 Omni-Directional / Fixed Bolt Mount / Outside or Inside Use  
 Optional: *Rugged M-Lander Adjustable Magnetic Mount Adapter*  
 Optional: *L-Bracket Mount Adapter*

M29BF 3-Lead Omni MIMO Cellular 4G LTE 5G NR / MIMO WiFi 6 / GPS GNSS Antenna – Bolt Mount  
 Dimensions / Configuration Options w/16ft Coax Cables (FAKRA)

Configuration Options (FAKRA)	M29BF-16-2CG: MIMO 2 x Cellular 4G 5G / GPS GNSS Antenna w/ 3 x 16ft Coax Cables - FAKRA M29BF-16-2WG: MIMO 2 x WiFi 6 / GPS GNSS Antenna w/ 3 x 16ft Coax Cables - FAKRA M29BF-16-CWG: Cellular 4G 5G / WiFi 6 / GPS GNSS Antenna w/ 3 x 16ft Coax Cables - FAKRA
-------------------------------	--------------------------------------------------------------------------------------------------------------------------------------------------------------------------------------------------------------------------------------------------------------------------

M29BF Dimensions  
 78mm / 3"



M29BF-16-2CG



M29BF-16-2WG



M29BF-16-CWG



Mounting Bolt  
 15.87mm (5/8") Length  
 19mm (3/4") Diameter

M29B / M29BF MIMO Series Antennas Include Built in Ground Plane. Includes 3 x 15ft Coax Cables  
 "Built To Spec" Custom Cable Options are Available. Contact us for details.





M29B 3-Lead Cellular 4G LTE 5G NR / WiFi 6 / GPS GNSS Antenna  
 MIMO Cellular 4G LTE 5G NR / MIMO WiFi 6 / GPS GNSS  
 Omni-Directional / Fixed Bolt Mount / Outside or Inside Use  
 Optional: Rugged M-Lander Adjustable Magnetic Mount Adapter  
 Optional: L-Bracket Mount Adapter

M29B 3-Lead Omni MIMO Cellular 4G LTE 5G NR / MIMO WiFi 6 / GPS GNSS Antenna – Bolt Mount  
 Optional Mounting Adapters (Sold Separately)



*Optional: Rugged M-Lander Adjustable Magnetic Mount Adapter Sold Separately*



*Optional: L-Bracket Mount Adapter w/U-Bolt Set Sold Separately*



M29B / M29BF MIMO Series Antennas Include Built in Ground Plane. Includes 3 x 15ft Coax Cables  
 "Built To Spec" Custom Cable Options are Available. Contact us for details.

