

**M25 Omni Series M2M IoT Antenna Specifications**  
*Cellular 4G LTE CBRS 5G NR / WiFi HaLow (902~928Mhz)*  
*Includes Mounting Hardware*

4G LTE CBRS 5G NR Frequency Range WiFi HaLow Frequency Range	617-960MHz / 1710-6000MHz 902~928Mhz
4G CBRS 5G NR Avg. Peak Gain: <i>Isotropic</i> WiFi HaLow Avg. Peak Gain: <i>Isotropic</i>	(7dBi) 617-960MHz / (9dBi) 1710-3800MHz / (9dBi) 4900-6000MHz / (9dBi) CBRS 3.5GHz (7dBi) 902~928Mhz
Typical Efficiency 4G 5G	617-960MHz >50% 1710-3800MHz >50% 4900-6000MHz >55%
Typical Efficiency WiFi HaLow	>50%
Isolation 4G 5G Isolation WiFi HaLow	>10dB >12dB
Correlation Co-efficient 4G 5G Correlation Co-efficient WiFi HaLow	<0.2 <0.1
Horizontal Half Power Beamwidth	360° / 360°
Vertical Half Power Beamwidth	40° / 20°
VSWR	≤2.0 / ≤2.0
Nominal Impedance	50Ω
Polarization	Vertical Omni Directional
Max. Power	50W

**Mechanical / Environmental Specifications**

Radome	High Impact Polycarbonate Height: 22" / 560mm - Diameter: 3" / 78mm
Connector Types	N Female
Coax Cables	Sold Separately <i>Standard and Custom Cable Length Options are Available</i> <i>All Standard Connector Ends Available (Including FAKRA Connector Ends)</i>
Mounting Hardware ( <i>Stainless Steel</i> )	Includes Mounting Hardware <i>Bracket Mount + 2 x U-Bolt Sets</i>
Mounting Mast Diameter	2"~3.5" / 50mm~90mm
Ingress Protection	IP69K
Wind Velocity	140 MPH
Operating Temp (°F)	-40° / +158° (°F)
Weight	2.2lbs / 1.1kg



Supported Cellular Service Provider Networks	
Verizon	Verizon 4G LTE 5G NR Bands 4G LTE: B2 B4 B5 B13 B46 B48 B66 (CBRS B48) 5G NR: N2 N5 N66 N77 Carriers (MVNOs) using Verizon Network: <i>Reach Mobile, Red Pocket Mobile, Spectrum Mobile, Ting Total, Tracfone, Twigby, US Mobile, Visible, Xfinity Mobile</i>
T-Mobile	Mobile 4G LTE 5G NR Bands 4G LTE: B2 B4 B5 B12 B25 B26 B41 B48 B66 B71 (CBRS B48) 5G NR: N25 N41 N66 N71 Carriers (MVNOs) using T-Mobile Network <i>Mint Mobile, TextNow, Lyca Mobile, Metro, Red Pocket Mobile Republic Wireless, Simple Mobile, Ting, Tracfone, US Mobile</i>
AT&T	AT&T 4G LTE 5G NR Bands 4G LTE: B2 B4 B5 B12 B14 B17 B29 B30 B48 B66 (CBRS B48) GSM: 1900MHz 5G NR: N2 N5 N66 N77 Carriers (MVNOs) using AT&T Network <i>Cricket Wireless, Net 10 Wireless, Red Pocket Mobile, Straight Talk</i>
Supported Cellular Bands	
5G NR Bands	n1 n2 n3 n5 n7 n8 n12 n13 n14 n18 n20 n25 n26 n28 n29 n30 n38 n40 n41 n48-CBRS n66 n71 n75 n76 n77 n78 n79 C-band
4G LTE Bands	B1 B2 B3 B4 B5 B7 B8 B12 B13 B14-FirstNet B17 B18 B19 B20 B25 B26 B28 B29 B30 B32 B38 B39 B40 B41 B42 B43 B46-LAA B48-CBRS B66 B71
3G Bands	B1 B2 B3 B4 B5 B6 B8 B9 B19
Supported WiFi IEEE Standards	
WiFi 1-6	WiFi 1 WIF 2 (802.11ba) WiFi 3 (802.11g) WiFi 4 (802.11n) WiFi 5 (802.11ac) WiiFi 6 6E (802.11ax)
* WiFi HaLow	WiFi HaLow (802.11ah) * Contact Us For M25 HaLow WiFi Configuration Options



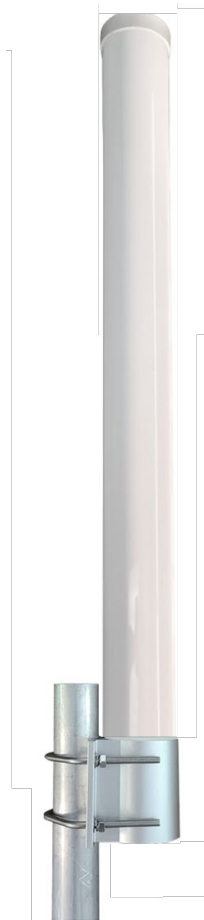


M25 Omni Series Cellular 4G 5G / WiFi HaLow Antenna  
 Cellular 4G LTE CBRS 5G NR / WiFi HaLow  
 Omni Directional / Bracket Mount / Outside Use  
 \* Contact Us For M25 WiFi HaLow Configuration Options

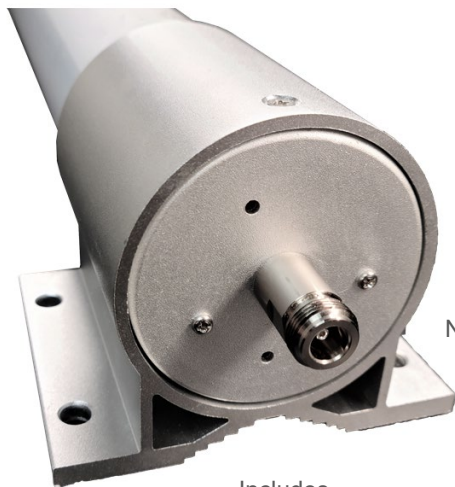
M25 Omni Series Antenna  
 Dimensions / Mounting Bracket

78mm / 3"

560mm  
 22"



Mounting Pole  
 NOT Included



N Female

Includes  
 Mounting Bracket

Includes  
 2 x U-Bolt Sets



M25 Omni Series Antennas Include Built in Ground Plane. Includes Mounting Hardware  
 "Built To Spec" Custom Cable Options are Available. Contact us for details.

